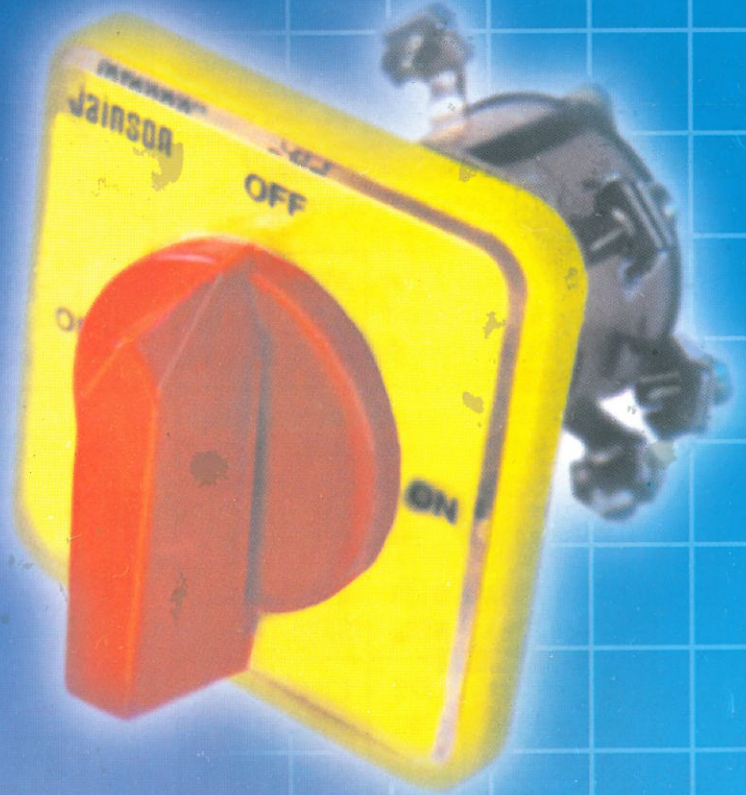


Jainson

Rotary Switches



10 - 100 Amps, AC Positions : 4, 6 & 8

Jainson Rotary Switches

GENERAL

Jainson Switches are designed for ON LOAD Switch and facilitate choice of multi position and multi pole circuits. The range of standard Rotary Switches from 10 to 100 Amps rating for use on potentials up to 440 service volts AC and 250 volts DC.

OPERATING MECHANISM

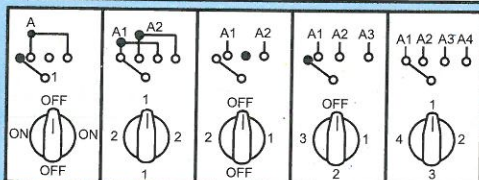
The Switches incorporate two types of operating mechanisms.

1. Quick make slow break principally for AC switching.
2. Quick make & quick break mainly for DC switching. Also for AC when quick operation of the switch is necessary.

FOUR POSITION SWITCHES, AC

SINGLE PHASE, 250 V AND THREE PHASE
440 V, AC, 50 Hz.

Rated Current Amps.	Pole	ON-OFF Cat. No.	2 Way No-Off Cat. No.	2 Way & Off Cat. No.	3 Way & Off Cat. No.	4 Way No-Off Cat. No.
Frame Size 1						
10	1	1012	1013A	1013B	1013C	1013D
	2	1023	1025A	1025B	1026C	1026D
16	1	L12	L13A	L13B	L13C	L13D
	2	L23	L25A	L25B	L26C	L26D
25	1	N13	N13A	N13B	N15C	N15D
	2	N25	N25A	N25B	N29C	N29D
Frame Size 1						
10	3	L34	L37A	L37B	L39C	L39D
	4	L45	L49A	L49B	L412C	L412D
16	3	M34	M37A	M37B	M39C	M39D
	4	M45	M49A	M49B	M412C	M412D
25	3	N37	N37A	N313B	N313C	N313D
	4	N49	N49A	N417B	N417C	N417D
Frame Size 1						
40	1	P12	P13A	P13B	P13C	P13D
	2	P23	P25A	P25B	P26C	P26D
60	1	Q13	Q13A	Q13B	Q15C	Q15D
	2	Q25	Q25A	Q29B	Q29C	Q29D
Frame Size 1						
40	3	P34	P37A	P37B	P39C	P39D
	4	P45	P49A	P49B	P412C	P412D
60	3	Q37	Q37A	Q313B	Q313C	Q313D
	4	Q49	Q49A	Q417B	Q417C	Q417D
100	3	R311	(Light Duty switching for A.C. Switching Only)			



RANGE OF PRODUCTION

Description of Switch

Current Ratings

4 position frame size 1 switches (90° between positions)	10, 16, 25, 30, Amps AC
4 position, frame size 3 switches (90° between positions)	40, 60, 100 Amps AC
6 position, frame size 2/3 switches (60° between position)	10, 16, 25, 30, 40, & 60 Amps AC only
8 position, frame size 3 switches (45° between position)	10, 16, & 25, 30 Amps AC only

SIX POSITION SWITCHES, AC

SINGLE PHASE, 250 V AND THREE PHASE
440 V, AC, 50 Hz.

Rated Current Amps.	Voltage	Poles	5 Way & Off Cat. No.	6 Way No.- Off Cat. No.
Frame Size 2				
10	250	1	1013E6	1013F6
	250	2	1026E6	1026F6
	440	3	L39E3	L39F6
16	250	1	L13E6	L13F6
	250	2	L26E6	L26F6
	440	3	M39E6	M39F6
25	250	1	N15E6	N15F6
	250	2	N29E6	N29F6
	440	3	N313E6	N313F6
Frame Size 3				
40	250	1	P14E6	P14F6
	250	2	P29E6	P29F6
	440	3	P313E6	P413F6
60	250	1	Q17E6	Q17F6
	250	2	Q213E6	Q213F6
	440	3	Q319E6	Q319F6

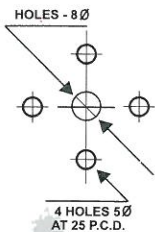
EIGHT POSITION SWITCHES, AC

SINGLE PHASE, 250 V AND THREE PHASE,
440 V, AC, 50 Hz.

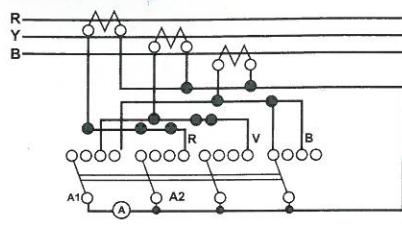
Rated Current Amps.	Voltage	Poles	7 Way & Off Cat. No.	6 Way No.- Off Cat. No.
Frame Size 3				
10	250	1	1014G8	1014H8
	250	2	1029G8	1029H8
	440	3	L313G8	L313H8
16	250	1	L14G8	L14H8
	250	2	L29G8	L29H8
	440	3	M313G8	M313H8
25	250	1	N14G8	N14H8
	250	2	N27G8	N27H8
	440	3	N313G8	N313H8

AMMETER SELECTOR SWITCHES

In 4 Position, frame size 1 & 6 position, frame size 2 current in each Phase with off position.

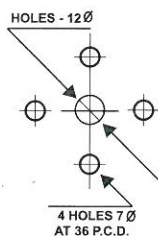


PANEL DRILLING

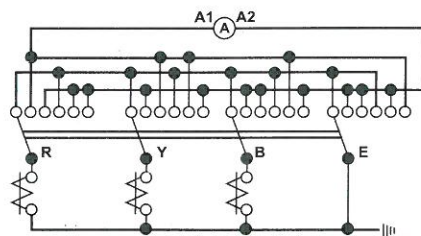


Cat. No. MA 36 4 position OFF-R-Y-B

Current in each Phase and Leakage or out of balance current with off position.

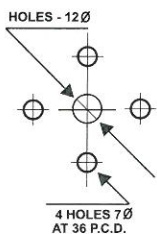


PANEL DRILLING

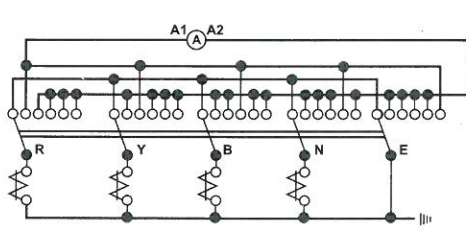


Cat. No. MA 68 6 position OFF-R-Y-OFF-BL

Current in each Phase and Neutral and leakage current with off position.



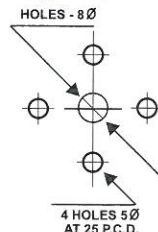
PANEL DRILLING



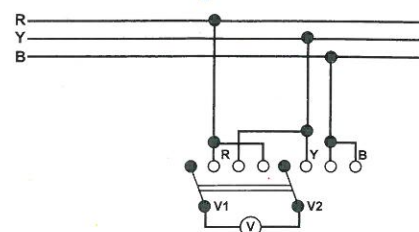
Cat. No. AM 60 6 position OFF-R-Y-B-N-O/B

VOLTMETER SELECTOR SWITCHES

In 4 Position, frame size 1 & 6 position, frame size 2 Voltage between Phase with off position.

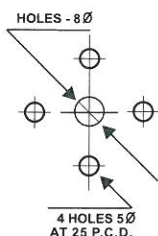


PANEL DRILLING

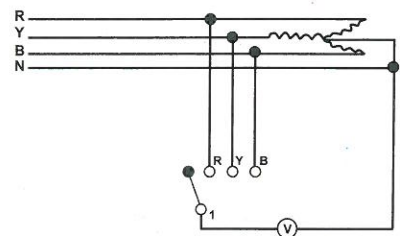


Cat. No. RKV 1035 4 position OFF-RY-YB-RB

Voltage between any Phase & Neutral with off position.

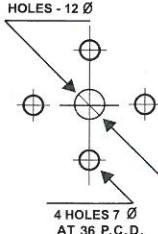


PANEL DRILLING

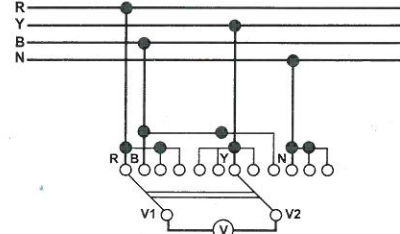


Cat. No. RKV 1015 4 position OFF-RN-YN-BN

Voltage between Phase & between Phase & Neutral without off position.



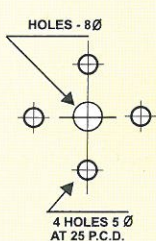
PANEL DRILLING



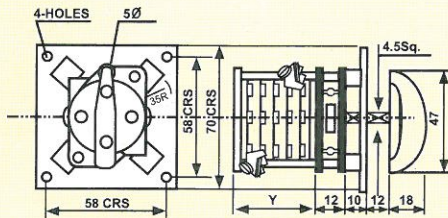
Cat. No. RKV 1036 6 position - RY-YB-RB-RN-YN-BN

10 - 16 - 25 AMPERES 4 POSITION

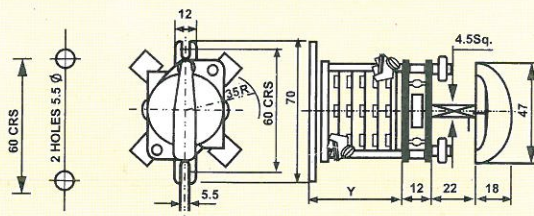
MOUNTINGS AND DIMENSIONS FOR AC FLUSH AT BACK OF PANEL - FRAME SIZE 1



PANEL DRILLING



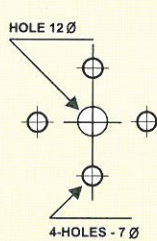
FLUSH AT FRONT OF PANEL - FRAME SIZE 1



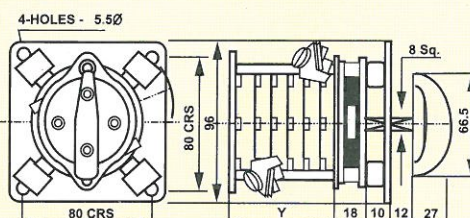
PANEL DRILLING

60 - 40 AMPERES 4 POSITION

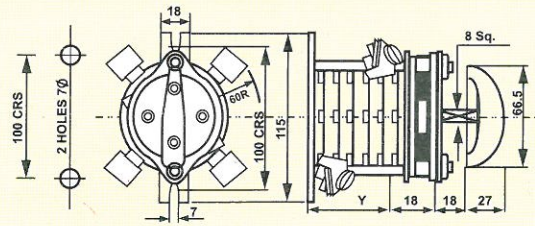
MOUNTINGS AND DIMENSIONS FOR AC FLUSH AT BACK OF PANEL - FRAME SIZE 3



PANEL DRILLING

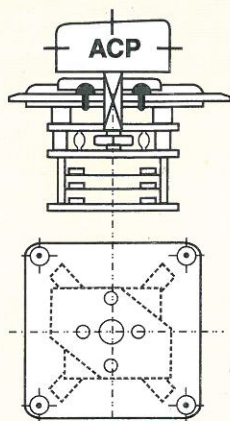


FLUSH AT FRONT OF PANEL - FRAME SIZE 3



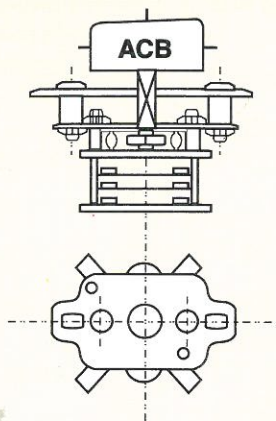
PANEL DRILLING

MOUNTING ARRANGEMENTS



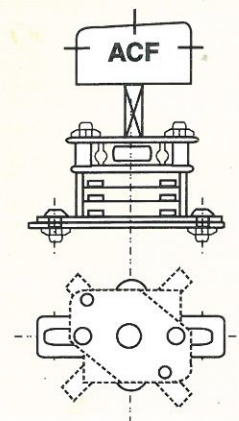
Flush at back of panel mounting
(specify ACP for AC and DCP for DC Switches)

FLUSH AT BACK OF PANEL



Back of panel mounting
(specify ACB for AC and DCB for DC Switches)

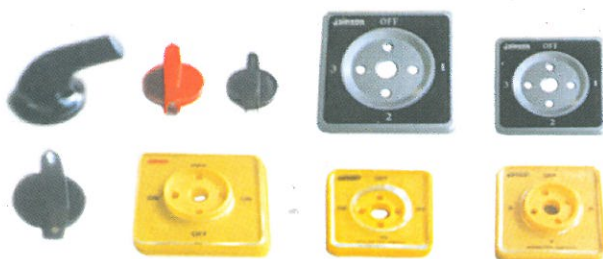
BACK OF PANEL



Front of panel mounting
(specify ACF for AC and DCF for DC Switches)

FLUSH AT BACK OF PANEL

ACCESSORIES / SPARES



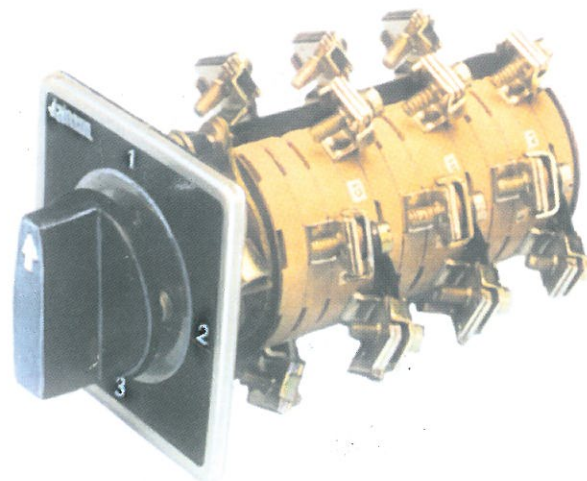
Bakelite Indicating Plates (inscription duly engraved)

- a) 75 x 75 mm size for 4 position switches, frame size 1
- b) 95 x 95 mm size for 4 position switches, frame size 3,
6 position frame size 2 & 3 and 8 position frame size 3.

Handles

- a) Alluminium Lever type handle for switches frame size 1
- b) Bakelite Pistol grip handle for switches, frame size 2 & 3
central key Lock (key removable in locked position only)
for 4 position switches 10 to 60 Amps.
Cubicle Door Interlock (Lockable type) for 4 position
switches 10 to 60 Amps.
Cubicle Door Interlock (Non-Lockable type) for 4 position
switches 10 to 60 Amps.

TAILOR MADE SWITCHES



We also entertain enquiries for Tailor-Made switches to suit special switches sequences, higher working voltage, blocked position, spring return to normal, non-reciprocation mechanism as well as DC switches etc.

Kiron Industries

MUMBAI - 400 064 (INDIA)

Authorised Dealer